



## Traditional Textures

Precoated aluminium for roof and façade

# Traditional TEXTURES

Traditional Textures precoated aluminium by Metal Solutions Ltd is an excellent alternative to Zinc, Copper, Copper Alloys and Corten Steel natural metals for cladding and roofing construction in a variety of applications.

The unique and innovative precoated aluminium, mimics the surface weathering of the more natural metals, but with a consistent aesthetically pleasing colour, resulting in a flawless finish.

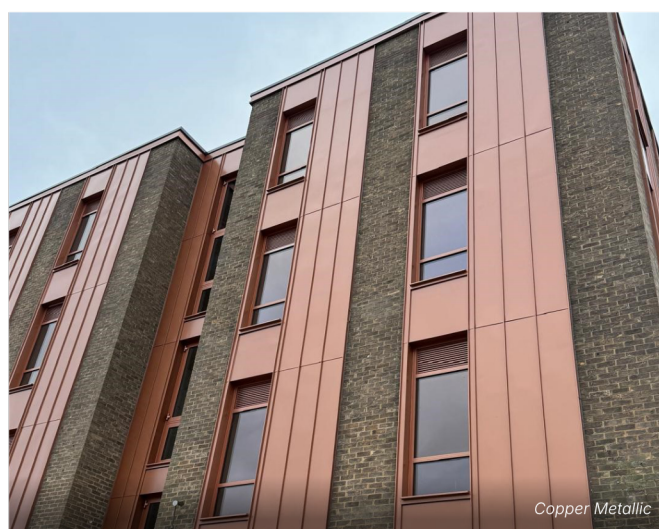
The special multi-layer coating offers high resistance to cracking, using an aluminium alloy that lends itself to complex fabrication and folding, with excellent malleability, even at low temperatures.

Traditional Textures are chosen by clients, architects and roofers alike, as a versatile product that can be supplied in coil form or fabricated, bespoke to each project.

As well as the 14 standard colours featured on the samples page, Metal Solutions can produce **any** RAL colour or specialist finish required.

## Sustainability and Environmental Benefits

*Further to the advantages of using the Traditional Textures coating material, the added benefits are those relating to the sustainability of aluminium. It can be recycled indefinitely in the building industry, and by only using a fraction of the energy required to process primary aluminium.*

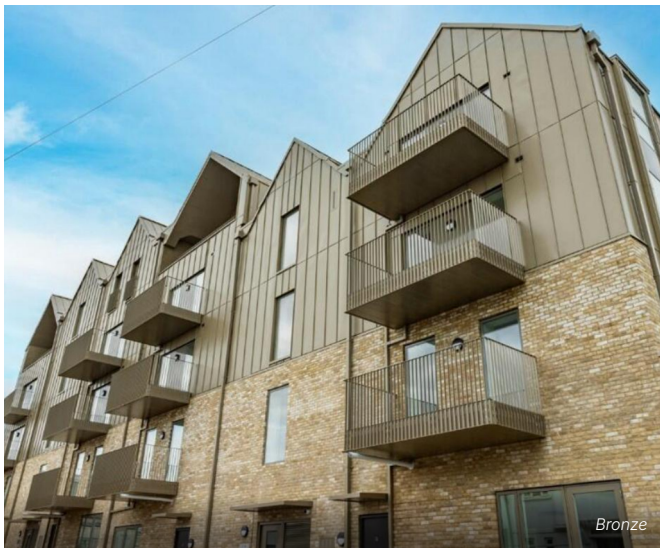






## The Advantages of using Traditional Textures

- ✓ Aluminium is lightweight, easy to work, has a long life and is eco-friendly.
- ✓ Traditional Textures coating is durable. It not only presents a very high resistance to ageing, UV, rust and corrosion but it is also efficient against chalking.
- ✓ Traditional Textures comply with construction product Class A1 or A2-s1, d0 (depending on finish) and is suitable for all uses as per The Building Regulations 2010 Fire Safety approved document.
- ✓ The coating is flexible, enabling it to be particularly suited to profiling, drilling, bending, pressing, punching and cutting.
- ✓ The finish of Traditional Textures offers an almost like for like aesthetic against natural metals, but without inconsistencies in the surface finish, sometimes present in real Zinc, Copper or Corten Steel, over time.
- ✓ Traditional Textures can be installed in a variety of ways; standing seam, angle seam, Snaplock® seam, flatlock cladding, shingles, reveal panel etc.
- ✓ Matching Rainwater goods produced to order.
- ✓ Warranties are available on request.



## Traditional Textures Coating Data

Properties	Method	Results
Coating thickness depending on colour	EN 13523-1	Non-textured surfaces 2 coats, 35µm to 40µm Textured surfaces 3 coats, 50µm to 55µm
Specular gloss	EN 13523-2	Satin and matt
Durability class	NF EN 1396	Class 4: severe
Pencil hardness	EN 13523-4	>HB
Resistance to cracking on rapid deformation	EN 13523-5	No cracking, no loss of adhesion
Adhesion after indentation	EN 13523-6	100% of adhesion
Resistance to cracking on bending	EN 13523-7	Very good flexibility (0.5T), depending on alloy and temper
Acetic salt spray fog resistance	EN 13523-8	1,000 h
Water immersion resistance	EN 13523-9	3,000 h
Humidity resistance	EN 13523-25	3,000 h
Colour fastness on natural weathering	Florida Exposure 45° South EN 13523-3	After 5 years exposure: Colour variation: 5 to 10 units ( $\Delta E$ ) depending on colour





*Zinc Patina*



*Graphite Patina*



*Dark Zinc Patina*



*Red Zinc Patina*



*Blue Zinc Patina*



*Green Zinc Patina*



*Copper Metallic*



*Copper Oxide*



*Copper Patina*



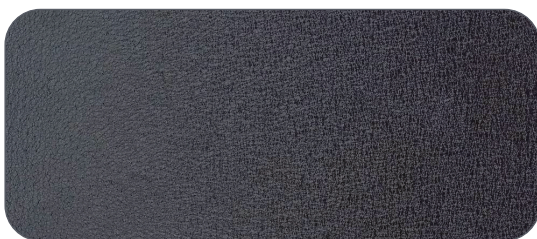
*Corten*



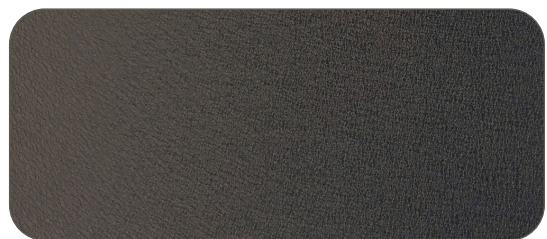
*Bronze*



*Inca Gold*



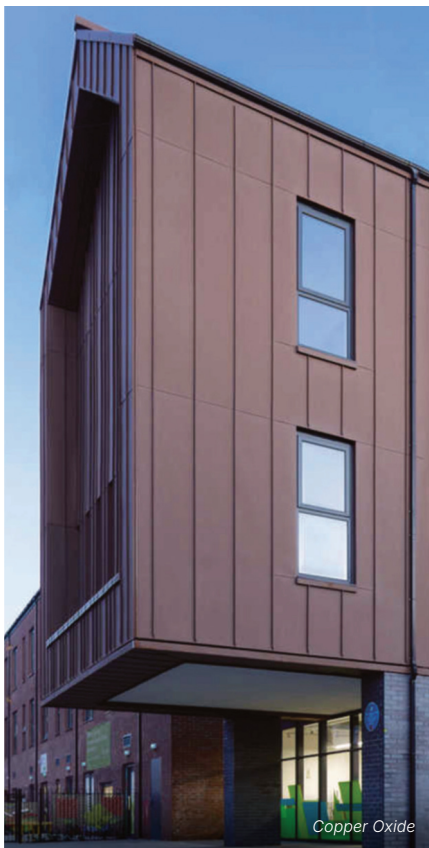
*Black Matt*



*Anthracite Matt*



Copper Patina



Copper Oxide



Inca Gold



Dark Zinc Patina

This Traditional Textures leaflet is intended as an aid in the understanding of Metal Solutions Traditional Textures precoated aluminium and refers to normal situations and conditions. The general fully supported metal roofing guidelines must be observed. The data contained in this publication is based on our own practical experience and we accept no liability for the accuracy or completeness. We would always advise that project proposals are checked by an engineer prior to installation.



## Metal Solutions Ltd

**Bolton Head Office**  
Opal House, Bentinck Street,  
Bolton, Greater Manchester  
BL1 4QG  
t: 01204 491800

**Glasgow Branch**  
Unit 4 Dalmarnock North,  
305 Dunn Street, Glasgow  
G40 4DE  
t: 0141 732 7777

sales@metalsolutions.uk.com  
www.metalsolutions.uk.com  
www.roofing-tools.com

