



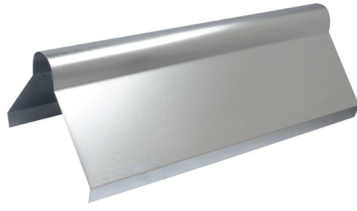
Roofing Fabrications  
Specialist Roofing Products for the Scottish Market

## Ridges & Watergates

### Ridges

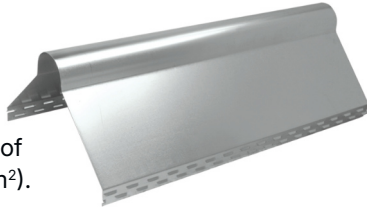
#### Zinc Ridge Natural

12" and 14" in natural zinc  
12zg and 14zg.



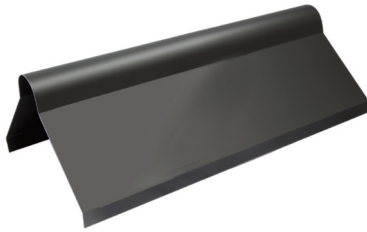
#### Zinc Ridge Vented

12" and 14" in natural zinc  
with 380 vents over the  
length of 2400mm ridge  
offers an optimal aeration of  
95cm<sup>2</sup> per piece (9500mm<sup>2</sup>).



#### Zinc Ridge Black

14" in black zinc 12zg.



#### Zinc Ridge Black Vented

14" in black zinc with 380  
vents over the length of  
2400mm ridge offers an  
optimal aeration of 95cm<sup>2</sup>  
per piece (9500mm<sup>2</sup>).



#### Aluminium Ridge

12" and 14" in natural  
aluminium 22swg.



### Watergate

#### Zinc Watergate

6" in natural zinc 12zg.

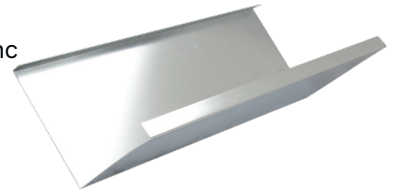


## Valleys & Accessories

### Valleys

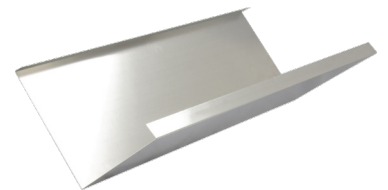
#### Zinc Valley Natural

12" and 14" in natural zinc  
12zg and 14zg.



#### Aluminium Valley

12" and 14" in natural  
aluminium 22swg.



#### Zinc Valley Black

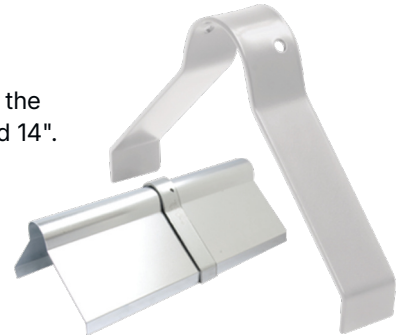
14" in black zinc 12zg.



### Straps

#### Heavy Duty Ridge Straps

Manufactured to match the  
ridges exactly in 12" and 14".



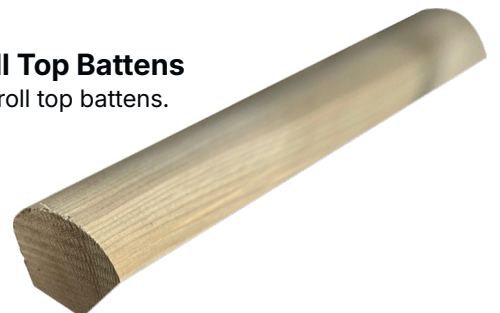
#### Heavy Duty Ridge Straps Black

Manufactured to match the  
ridges exactly in 12" and 14",  
powder coated.



#### Wooden Roll Top Battens

45mm treated roll top battens.

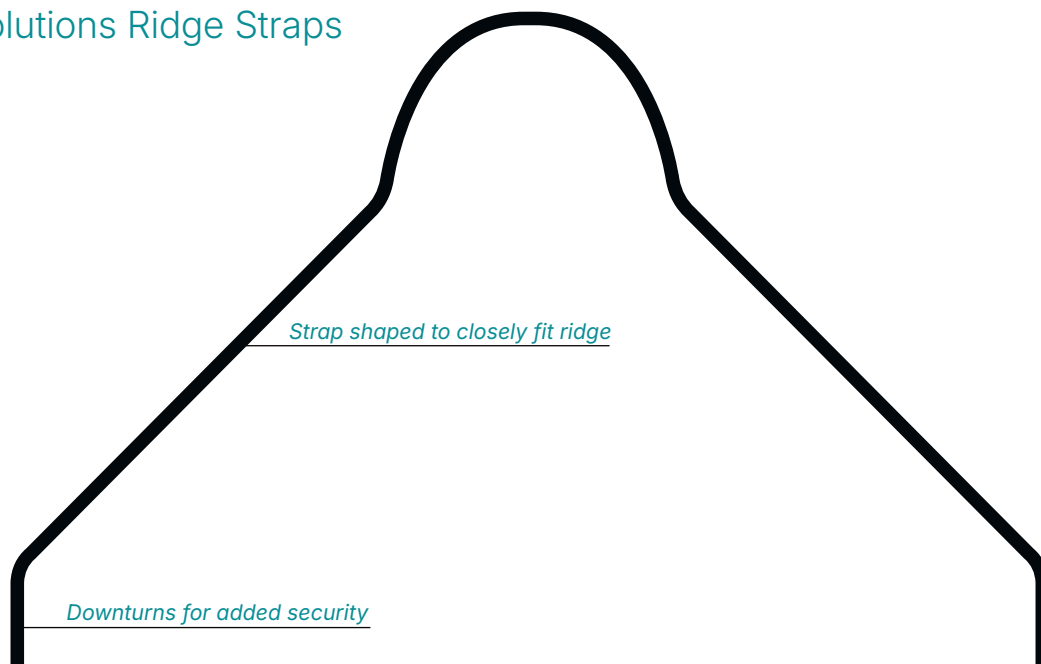


## Scottish Fabrications Size & Variants Guide

Please see the guide below for the variants available to order from Metal Solutions Ltd

Zinc Ridge	14" x 14zg 14" x 12zg 12" x 12zg 14" x 12zg	Natural Natural Natural Black	Anti-finger print layer (AFP)
Zinc Ridge Vented	14" x 14zg 14" x 12zg 12" x 12zg 14" x 12zg	Natural Natural Natural Black	Anti-finger print layer (AFP)
Aluminium Ridge	14" x 22swg 12" x 22swg	Natural Natural	
Heavy Duty Ridge Straps	14" 12" 14"	Natural Natural Black	
Zinc Valley	14" x 14zg 14" x 12zg 12" x 12zg 14" x 12zg	Natural Natural Natural Black	Anti-finger print layer (AFP)
Aluminium Valley	14" x 22swg 12" x 22swg	Natural Natural	
Zinc Watergate	6" x 12zg	Natural	
Timber Roll	45mm x 45mm	Treated	Length of Roll 2400mm

## Metal Solutions Ridge Straps



## Why order fabrications from Metal Solutions Ltd?

- ✓ Quick turnaround on most fabrications available from stock
- ✓ We offer vented ridges on all ridge sizes
- ✓ We offer profile ridge straps, to match ridges
- ✓ Our staff are specialists in metal fabrications
- ✓ No need to use separate suppliers, all materials and ancillary products can be ordered under one roof
- ✓ All products are made in Scotland, stocked in Scotland and delivered from our Scottish depot
- ✓ Samples are available on request
- ✓ Helpful and friendly service

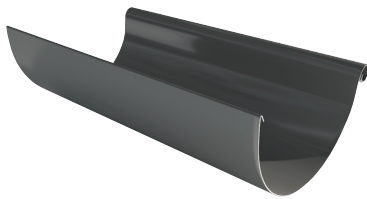
## Metal Solutions Scotland

With over 30 years' experience in roofing fabrications. Metal Solutions Ltd produce the specialist products required for the Scottish market from our Glasgow facility which opened in 2020.

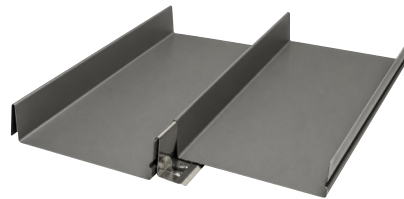
From our depot in Glasgow we manufacture, stock and deliver all the fabrications for our customer network throughout Scotland utilising our knowledge and experience to ensure a product and service that is second to none.



**Green | ine**™



**SNAPLOCK**™



The depot stocks a wider range of metals and ancillary materials targeted at the Roofing Industry, these include:

- ✓ Coil materials in Copper, Zinc, GreenCoat® Steel, Precoated Aluminium & Stainless Steel
- ✓ Roofing membranes and accessories
- ✓ GreenLine® Steel, Zinc, Copper and Stainless Steel rainwater systems
- ✓ Fully supported Snaplock® metal roofing systems

Providing the Scottish Roofing market with a 'one-stop' shop facility for prompt delivery or collection

This Scottish Fabrications leaflet is intended as an aid in the understanding of our Scottish Fabrications products and refers to normal situations and conditions. The general fully supported metal roofing guidelines must be observed. The data contained in this publication is based on our own practical experience and we accept no liability for the accuracy or completeness. We would always advise that project proposals are checked by an engineer prior to installation.



### Metal Solutions Ltd

**Bolton Head Office**  
Opal House, Bentinck Street,  
Bolton, Greater Manchester  
BL1 4QG  
t: 01204 491800

**Glasgow Branch**  
Unit 4 Dalmarnock North,  
305 Dunn Street, Glasgow  
G40 4DE  
t: 0141 732 7777

glasgow@metalsolutions.uk.com  
www.metalsolutions.uk.com  
www.roofing-tools.com

